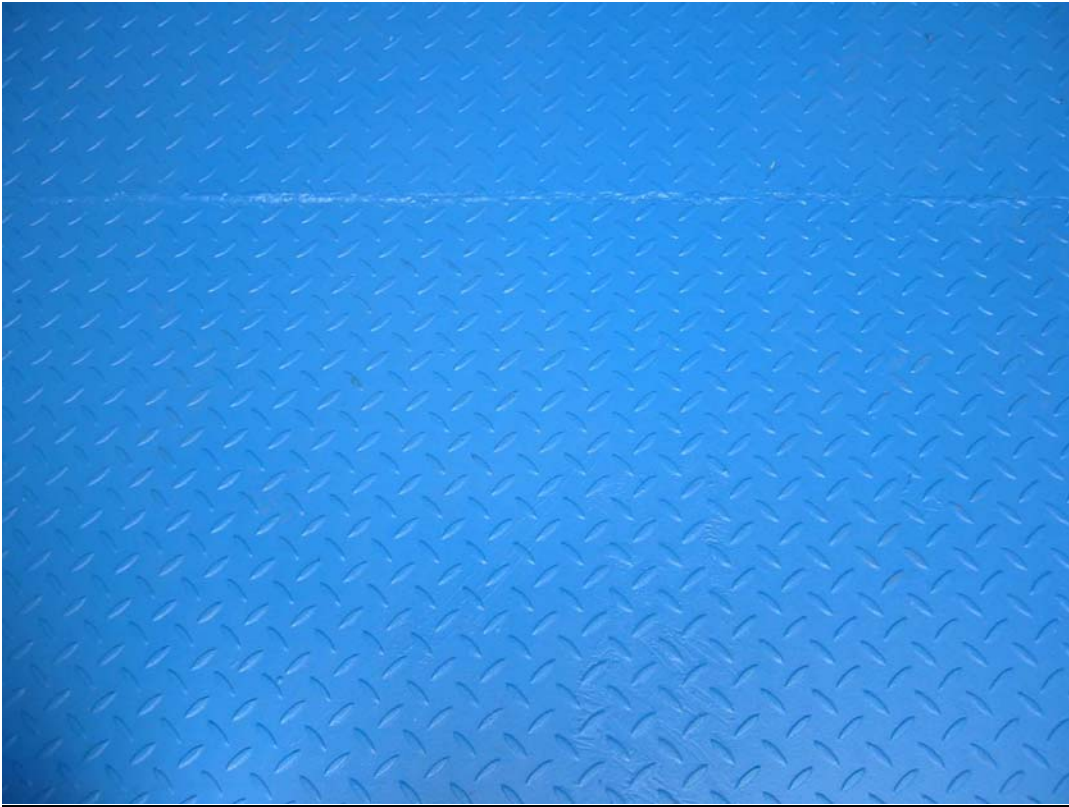


20' Low Cube (LC): 20' x 8' x 8'



checker plate

Dimension

External (mm)	Length	6,058
	Width	2,438
	Height	2,438
Internal (mm)	Length	5,898
	Width	2,350
	Height	2,237
Door	Width	2,343
Opening (mm)	Height	2,127

Internal Capacity

31 CBM.

Ratings

Title	KGS
Max. Gross Weight	24,000
Tare Weight	2,160
Max. Payload	21,840

Transportation

The container is constructed to be suitable for transportation in normal operating conditions by modes of:

- A. Marine - on deck or in cell guided by vertical or diagonal lashings
- B. Rail - on flat or container car secured at its bottom corner fittings
- C. Road - on flat or chassis secured at its bottom corner fittings

Paint

Exterior:

Apply one coat of zinc rich primer to **30** mic. DFT.

Apply one coat of epoxy primer to **40** mic. DFT.

Apply one coat of Chlorinated rubber or Acrylic top coat to **40** mic. DFT.

Total **110** mic. DFT.

Interior:

Apply one coat of zinc rich primer to **25** mic. DFT.

Apply one coat of epoxy top coat to **50** mic. DFT.

Total **75** mic. DFT.

Undercoating

The whole underside is coated with **25** mic. of zinc rich primer and **200** mic. of Waxy or Bituminous undercoating.

Total **225** mic. DFT.

Technical Data

Material	Corten Steel
floor	28mm plywood floor
Classification Society	Germanischer Lloyd or Bureau Veritas
Regulations & Standards	ISO/TC-104, TIR, TCT, UIC, CSC
Paint Supplier	Hempel
Outside colour	RAL 5010
Inside colour	RAL 7035

Other Modified Types per Request

- own prefix and serial numbers
- lashing strips, lashing rings
- more ventilators
- steel floor, checker plate or plain steel
- bamboo floor